

## CONTACT US:

503-916-5768

**PRINCIPAL:**

Jon Jeans, [jjeans@pps.net](mailto:jjeans@pps.net)

**PRINCIPAL ADMIN. ASSISTANT:**

Lynda Gordon, [lgordon@pps.net](mailto:lgordon@pps.net)

**REGISTRAR/SCHOOL ADMIN. ASSISTANT:**

Kim Mathews, [kmathews1@pps.net](mailto:kmathews1@pps.net)



## EVENTS

**May 19th:** Incoming Kindergarten student tour

**June 1st:** Registrations Due

**Summer 2023:** Rieke PTA hosts summer meet ups to connect with other Kindergarten families; dates TBD

*Check the Rieke website for more information.*



## FEELING CLICKY?

RIEKE WEBSITE: [PPS.NET/RIEKE](https://pps.net/rieke)

ENROLL ONLINE: [PPS.NET/ENROLL](https://pps.net/enroll)

KINDERGARTEN INFO:  
[PPS.NET/CONNECT-TO-K](https://pps.net/connect-to-k)

RIEKE PTA  
[RIEKEPTA.ORG](https://riekepta.org)

## RIEKE ELEMENTARY

1405 SW VERMONT ST, PORTLAND, OR 97219

[www.pps.net/Rieke](https://www.pps.net/Rieke) | 503-916-5768

# CONNECT TO KINDERGARTEN

Congratulations! You and your child are starting an exciting and important adventure: Kindergarten!

In Kindergarten, your child will:

- Make new friends and learn about the world around them.
- Learn about letters, sounds, words and books.
- Learn about numbers, shapes, patterns and size.
- Talk and write about their ideas.
- Explore reading, writing, mathematics, science, social studies, technology and art.



### KINDERGARTEN REGISTRATION CHECKLIST:

- Verify Rieke is your neighborhood school by visiting [pps.net/enroll](https://pps.net/enroll)
- Complete Online Registration Forms.
- Provide Immunization Records.
- Show Birth Certificate or other birth record.
- Show Two Proofs of Address— i.e. utility bills, rental agreements, mortgage papers. Items must be recent and have parent or guardians name listed.

# REGISTER ONLINE [PPS.NET/ENROLL](https://pps.net/enroll)



## A TYPICAL DAY IN KINDERGARTEN

Individual kindergarten classrooms and curriculum will vary according to the interests and backgrounds of the children. But all developmentally appropriate kindergarten classrooms will have one thing in common, the focus will be on the development of the child as a whole.

- Independent reading
- Calendar
- Read alouds
- Math
- Various whole group literacy activities
- Writers workshops
- Lunch, snack, recess
- Morning jobs: Math and Literacy
- Social Play

## WHAT WE OFFER

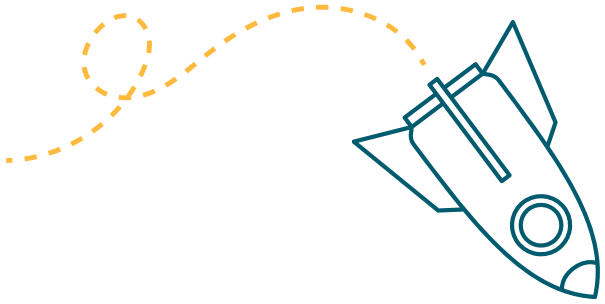


## ATTENDANCE MATTERS!

Attending school every day helps children feel better about school and themselves.

Establishing bedtime and morning routines help promote good attendance. Communicating about the school day and upcoming events helps students get excited about their day.

If your child is ill use the symptoms checklist on [pps.net/rieke](https://pps.net/rieke). If your child will be absent notify the office at [riekeattend@gmail.com](mailto:riekeattend@gmail.com)



## KINDERGARTEN FAQ'S

### What time does school start and end?

Rieke starts at 8:35 am, tardy bell is 8:45am and ends at 3:00pm. Lunch is at 11:30am daily.

### Is my child old enough for kindergarten?

Your child is eligible for kindergarten if he/she is 5 years old on or before September 1st of the enrolling school year.

### What if my child was born after September 1st but seems ready for kindergarten?

Oregon law allows early entry to kindergarten for eligible children. If you believe your child should start school early and was born on or before October 1st of the enrolling year, contact the Talented and Gifted Office for an application at 503-916-3358.

### My child has special educational or physical needs. How can I get help?

The PPS Early Childhood Transition Team helps make the move to kindergarten easier for children eligible for special education services. For help, contact the Special Education Office at 503-916-3152.

### Are there after-school programs for my child?

Rieke offers robust afterschool enrichment opportunities, such as, Legos, chess, yoga, Spanish and more.

Childcare is available through different organizations. Champions and Vermont Family Life Center are two parents often use. Contact them directly for more information.

### Can my child take the bus to and from school?

PPS provides bus transportation for students. To find bus stop information, go to [pps.net/transportation](https://pps.net/transportation) or call 503-916-6901. All Kindergartners must be met by an adult at their stop.

### Got more questions about Kindergarten?

Visit [pps.net /connect-to-k](https://pps.net/connect-to-k)

### READINESS IDEAS

1. Ask your child to name as many animals as you can. Draw a picture of an animal you like.
2. Write upper and lower case letters for your child to trace.
3. Help your child learn his/her full name and telephone number.
4. Play "school" and talk positively about school to help your child feel confident.
5. Find rhyming words in your books
6. Trace your child's foot. Ask them to use scissors to cut around the drawing. Find things around the house that are bigger, smaller and the same size.
7. Read lots of books with your child.



**REGISTER ONLINE [PPS.NET/ENROLL](https://pps.net/enroll)**